

Welcome to the World of Ajna Designs

- We specialize in providing upscale hotel gift shops, spas and boutiques with the finest Artisan, Unique and On-trend jewelry.
- From Classic designs to Fashion Forward
 - Eye Catching Displays
 - Add Elegance to your retail area
 - Easily Increase your Bottom Line
 - Excellent Customer Service
 - Fast Fulfillment



Makes an eye-catching display!!



Swarovski Crystal Earrings

All styles available in variety of Swarovski Crystal colors
14K Gold Filled or Sterling Silver- Feather Light - Handcrafted

Measurements are of the drop



Goddess

2 * 1.25 inches
\$70.00 - 5087



Infinity

.9 * 2.3 inches
\$75.00 - 8288



Rain Drop

2.15 inches
\$75.00- 8270



Elizabeth

1 * 2 inches
\$74.00 - 8365



Mini-Goddess

.9 * 1.4 inches



Katherine

1.75 inches
\$70.00 - 8321



Waterfall

3 inches
\$70.00 - 8308



Pearly Hoop

Pearls & Swarovski Crystals

8394 - \$80.00W
Available with different
Swarovski Colors



All Earring have either Sterling Silver or 14k Gold Filled Posts



Betsy Earrings

\$80.00 - 8367



Daniela Earrings

White Swarovski Crystal & Pearls

\$80.00 - 8317



Maggie Earrings

2.8"

\$80.00 - 8318



Peggy Earrings

Hand Crafted Triple Loops

Small - 2.25" \$70.0 & Large - 3.5" \$76.00

7011



Tree of Life

8354 - \$45.00W

1.25 inches



Debbie Posts

Variety of Stones

\$45.00 - 8326

11mm



Hoops

8402 - \$45.00W

Available in a variety of colors and stones

14k Gold Filled or Sterling Silver



Hoopy Fringe

Quartz - Gold Only

8395 - \$45.00W

Available in a variety of colors



Signature Necklaces

Swarovski Crystals

\$120.00 - J3060



Katya Pearls

Gold Plated chain detail

\$105.00W - J1099



Dalia

\$120.00 - J3100



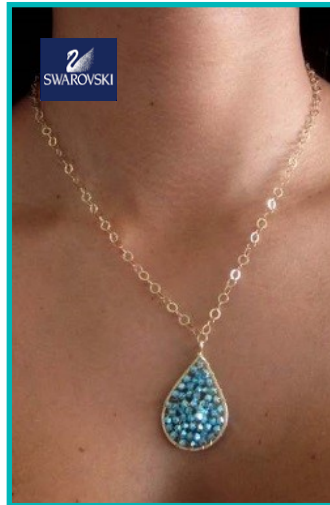
October Rose

\$120.00 - J3087



Lisa Necklace

\$55.00W - J2001



Goddess Necklace

\$55.00W - J8272





Delicate Necklaces

All necklaces on 16 inch, Sterling Silver or 14k Gold Filled chain with 1 inch extension
 Charms are Sterling Silver or Sterling Silver Dipped in Gold
 With Cubic Zirconia Details - Comes in Decorative Box



Moon Small
 \$74.00 - ND44
 7*11mm



Eye Small
 \$74.00 - ND42
 7*10mm



Heart Small
 \$74.00 - ND43
 12*10mm



Star Small
 \$72.00 - ND81
 13*15mm



Smile
 \$76.00W- ND61
 10*12mm



Kisses
 \$88.00 - ND52
 15*11mm



Star
 \$104.00 - ND51
 13*14.5mm



Key/Heart
 \$80.00 - ND54
 14*11mm



Love
 \$128.00 - ND41
 21*9mm



Devilish Heart
 \$92.00 - ND24
 13*16mm



Infinity
 \$102.00 - ND26
 25*9mm



Lucky Eye
 \$104.00 - ND65



Lightening Bolt
 \$124.00 - ND80
 7*24mm



Happy
 \$96.00 - ND57
 18 * 4mm



Coral
 \$98.00 - ND46
 11*20mm



Horn
 \$120.00 - ND7
 10*17mm



Moon & Star
 \$88.00 - ND11
 10*15mm



Hamsa
 \$96.00 - ND21
 15*23mm



Chinese Knot
 \$116.00 - ND10



Lucky Horse Shoe
 \$139.00 - ND25
 35*32mm



Butterfly
 \$120.00 - ND18
 25*17mm

Star Burst
 \$116.00 - ND9

Triangle Small
 \$66.00 - ND34
 11*7mm

Flower
 \$102.00 - ND19
 20mm

Artsy Necklace

Mold it into whatever shape you want.

Crystals & Gold Plated Chain & Components

#3150 - \$125.00

Blue - Gold - White



Rosario Dawson



Arm Candy

Can be worn anywhere on the arm - Adjustable

\$70.00W #AC1

Available in many colors/stones





Stackables

All bracelets are 7 inches - Custom sizes available - Other colors available




Choice of Stones



Lucky Eye Charm Bracelet

14k Gold Filled & Plated charms

\$43.00 - B694 

Emma Charm

Bracelets 

Brass Dipped in Gold

\$30.00 - \$88.00

B695



Stone Charm Bracelet

Gold plated chain

\$40.00 - B602




Chain Bracelet

\$35.00W - B622



Laughing Buddha Bracelets

Resin head 
\$30.00 - B693



Charms from the Sea

All Charms are available in Sterling Silver or Sterling Silver Dipped in Gold with Cubic Zirconium
Approximately 7-10mm



Starfish

\$38.00 - JSC7



Turtle

\$42.00 - JSC8



Crab

\$34.00 - JSC15



Dolphin

\$36.00 - JSC9



Flip Flops

\$46.00 - JSC5



Shell

\$40.00 - JSC4



Palm Tree

\$40.00 - JSC6



Sailboat

\$40.00 - JSC2



Captain's Wheel

\$46.00 - JSC16



Sailfish

\$38.00 - JSC3



Seahorse

\$42.00 - JSC1



Sea Charms Bracelets

Pearls & Swarovski Crystals - 6.75 inches on elastic



Seahorse

\$42.00 - BSC1

Sailboat

\$40.00 - BSC2

Sailfish

\$38.00 - BSC3

Shell

\$40.00 - BSC4

Flip Flops

\$48.00 - BSC5

Crab

\$34.00 - BSC15

Palm Tree

\$40.00 - BSC6

Starfish

\$38.00 - BSC7

Captain's Wheel

\$46.00 - BSC16

Turtle

\$42.00 - BSC8

Dolphin

\$36.00 - BSC9

Shark's Tooth

\$40.00 - BSC10



Delicate Charm Bracelets Collection

Charms are Sterling Silver or Sterling Silver Dipped in Gold with Cubic Zirconia details on elastic. 3- 6mm Blue Turquoise, White Turquoise, Tiger's Eye & Black Onyx

Other Stones Available



Black Onyx

Blue Turquoise

White Turquoise



Key & Heart

BD22 - 34.00
14*30mm



Key

BD21 - 38.00
7*20mm



Moon

BD23 - 34.00
8*10mm



Star

BD1 - 39.00
10mm



Coin

BD7 - 30.00
10mm



Star Burst

BD50 - 52.00
18 * 23mm



Tree of Life

BD65 - 44.00
20mm



Horse Shoe

BD2 - 30.00
10mm



Unity

BD25 - 42.00
10*15mm



Peace

BD8 - 30.00
11mm



Apple

BD8 - 34.00
19mm



Clover

BD62 - 30.00
18mm



Clover

BD4 - 30.00
11mm



Clover

BD39 - 36.00
12mm



Wing

BD27 - 38.00
5*13mm



Butterfly

BD15 - 31.00
16*10mm



Smiley Face

BD40 - 35.00
17*24mm



Infinity

BD67 - 38.00
8 *22mm



Snake

BD14 - 30.00
9*17mm





Delicate Charm Bracelets Collection

Charms are Sterling Silver or Sterling Silver Dipped in Gold with Cubic Zirconia details on elastic with 3mm Blue Turquoise, White Turquoise & Black Onyx - Other Stones Available



Double Heart
BD35 - 36.00
12 * 25mm



Heart
BD9 - 30.00
10mm



Heart
BD64- 38.00
12mm



Heart
BD63 - 38.00
10mm



Lucky Eye
BD16 -30.00
7*10mm



Lucky Eye
BD5 - 31.00
11mm



Lucky Eye
BD61 - 38.00
13mm



Hamsa
BD26- 42.00
15mm



Star of David
BD3 - 30.00
10mm



Cross
BD12 - 30.00
9*17mm



Tree of Life
BD6 - 31.00
11mm



Hamsa
BD11 - 32.00
6*10mm

Below bracelets are 7 inches on elastic with Pearls



Pearls
B68 - 58.00



Ruby & Tourmaline
B70 - 46.00
Sold out



Green Onyx
B71 - 46.00



Labradorite
B69 - 46.00



Chakra Bracelets










Quartz, Swarovski Crystals, 14K Gold Filled & Dipped on String
One Size Fits ALL

Set of 7 = \$238.00W \$34.00W each



Description on back of the cards

| | |
|---|---|
|  <p>Muladhara Chakra - The Pelvis, energetically where we hold our foundation, sense of security and confidence. Quartz, Swarovski Crystals & Sterling Silver Dipped In Gold ajnadesigns.com</p> |  <p>Svadhithana Chakra - The Abdomen, the pleasure zone, our inner child, the ability to enjoy life and emotional fulfillment Quartz, Swarovski Crystals & Sterling Silver Dipped In Gold ajnadesigns.com</p> |
|  <p>Manipura Chakra - Solar Plexus, energetically where we hold our energy. Quartz, Swarovski Crystals & Sterling Silver Dipped In Gold ajnadesigns.com</p> |  <p>Anahata Chakra - The Heart, energetically where we hold the ability to give and receive love. Quartz, Swarovski Crystals & Sterling Silver Dipped In Gold ajnadesigns.com</p> |
|  <p>Visuddha Chakra - The Throat, energetically where we hold our ability to communicate. Quartz, Swarovski Crystals & Sterling Silver Dipped In Gold ajnadesigns.com</p> |  <p>Ajna Chakra - The Brow, energetically where we hold creativity, connection to our higher self & wisdom. Quartz, Swarovski Crystals & Sterling Silver ajnadesigns.com</p> |
|  <p>Sahasrara Chakra - The Crown, our connection to "that which is greater than ourselves". BLISS Quartz, Swarovski Crystals & Sterling Silver Dipped In Gold ajnadesigns.com</p> | |